

Historic, archived document

Do not assume content reflects current scientific knowledge, policies, or practices.

62

RO

THE CONARD-PYLE CO. • WEST GROVE, PA. 19390
Phone: 215-869-2426



National Agricultural Library
RECEIVED
★ MAR 23 1970 ★
U. S. Department of Agriculture

SPRING 1970

THE

Star[®] Roses


ANGEL FACE

GUIDE
TO GARDEN
PLEASURE

Angel Face

(shown on front cover)

ALL-AMERICA AWARD WINNER FOR 1969

 Floribunda. As you can see from the front cover picture, Angel Face is something entirely new in roses. The color is the first "different" point that you notice—and what a beautiful color it is! The warm lavender has a soft ruby-red tint in the buds and on the petal edges. This is a lovely color that does not fade. The shape of the flower is different from most roses too. Buds are very trim, and when they open to full size they show a delightful ruffling on the petals. Blooms are about 3½ inches across, or perhaps smaller in midsummer, but always neat, precisely ruffled and never heavy. They come one to a good strong stem, or in smallish clusters, all summer. Growth is sturdy but quite low. Angel Face even has a nice new-fashioned perfume to go with its new-fashioned lavender color. (Swim & Weeks.) *Plant Pat. 2792.*

\$3.50 ea.—3 or more, \$3.10 ea.

HOW TO USE ROSES

See Page 16

Garden State Grandiflora. This is a luscious big flower with satiny petals and the high pointed center that is so much admired. Extra warm pink color and a strong, tall plant make it an outstanding Grandiflora. In the bud stage the color is deep pink to light red, and when fully open the flower is a slightly deeper shade of pink on the outside of the petals than on the face. Always fresh and inviting, even on the hottest days of midsummer. Petals are broad and firm and the blooms large and solid, with light tea perfume. Sometimes they are carried one on a stem, and at other times in candelabras of several. The foliage of this beautiful Grandiflora is especially good. In its early stages it is bronzy red but as it grows it covers the tall bush with a lush deep glossy green mantle. Vigorous and well branched, Garden State is best planted where its plentiful, shining foliage will act as a fine backdrop. (The House of Meiland.) *Plant Pat. 2349.*

\$3 ea.—3 or more, \$2.65 ea.



Save
Time—
Order by
Mail

No parking problems, no waiting at the check-out counter when you order your roses by mail.

So browse through our catalog, fill out your order and mail it today. We'll send your bushes when it's time to plant them in your area. Planting time is almost here . . . so hurry!

GARDEN STATE



The *ONE and Only* ALL-AMERICA AWARD WINNER for 1970

First Prize Hybrid Tea. Who can resist the only rose to win the All-America Award for this year? You will see it in all the garden pages and flower magazines, and it is sure to be a best-seller. First Prize is a "natural" as a name for this handsome big Hybrid Tea. The color is a splendid rich deep pink in two shades. On the outside the petals are almost a light red, but the inner side is lighter and toward the center of the flower there is a soft blending of old ivory. The petals have a satiny sheen to them. Large, magnificent buds, perfectly formed, and beautifully shaped blooms with a graceful spiral center. There are about 25 of the wide petals, rolled back as they open. The flowers are a good 5 inches across, and are grand for cutting. The strong plant grows medium tall and is well covered with healthy, dark green leaves. It flowers well and gives a good account of itself all during the summer. (Boerner.) *Plant Pat. 2774.*

\$4.50 ea.—3 or more, \$4.10 ea.



You don't have to wait for someone to send you roses from the florist! Grow your own, and cut some every week.



FIRST PRIZE

Stretch
Your
Dollar!
Buy Roses



Roses will make the outside of your home as attractive as the inside. Just think of their advantages—a rose bush lives many years, even where the thermometer goes down below zero in winter. Most roses bloom time after time from spring to frost (and you can't say that about many plants). From the tiny Miniature roses to the tall Climbers, they come in a wealth of beautiful colors. And what is more exciting for a bouquet than lovely roses that you have grown yourself? The suggestions in this Guide can help you enjoy them in your own yard and on any budget. See "How to Use Roses" on page 16.



OFFER No. 163

4 to Please You
COMANCHE
FIRST PRIZE
GARDEN STATE
STARBURST

\$12.90





STARBURST

Starburst NEW. Grandiflora. Our newest Grandiflora . . . a very fine one that will fit easily into any planting. Of medium height, with flowers carried in clusters and also singly on a stem. The color is a new, gay and cheerful combination of orange-red and yellow. Buds are yellow at the base, blending into soft orange-yellow at the edge. As they slowly open they show a bright orange-red on the inner side of the petals. Open flowers are like ruffled cups, and a cluster is a complete bouquet in itself. They have a pleasant light fragrance and are lovely for cutting. Starburst is a sturdy, healthy plant, and will bloom well all summer. (The House of Meiland.) *Plant Pat. App. For.*

\$3.50 ea.—3 or more, \$3.10 ea.

FOR ROSE FACT SHEET

See Page 17



PINK PEACE



**We Prepay the Delivery of
Every Plant We Sell**

You don't have to figure parcel post charges on the plants you order from Star Roses. We do that for you! Not only that, but WE PAY *all* the charges, direct to your door . . . an extra service for your benefit.

The one little stamp you put on your order is the only postage you pay.

Comanche



Grandiflora. A bold color and dashing manner inspired the name Comanche for this rose. Even one bush in bloom is a striking picture. The color is a fiery red, and blooms come generally in clusters of 6 to 8 at the top of the sturdy canes. They are 3 to 4 inches across, with about 50 petals, double and well shaped. Comanche's buds are deep brick-red but as they open they seem to catch on fire. Flowers are a warm orange-red, with a softer rosy red color on the outside of the petals. Leaves are extra dark and thick, a beautiful reddish bronze in the young stage and becoming more leathery as they develop. The plant is bushy and vigorous, up to 5 feet tall, and it blooms time after time until frost. A handsome rose to plant now and enjoy for years to come. Its color—like a splash of war paint—and its sturdy, upright manner of growing will make a wonderful contribution to any spot where it is planted. (Swim & Weeks.) *Plant Pat. 2855.*

\$3.75 ea.—3 or more, \$3.30 ea.



COMANCHE

Newcomers To Delight You

Pink Peace

Hybrid Tea. The name will tell you that this variety is related to the famous Peace rose. Although individual flowers may not be quite so large as those of Peace, the plant is just as strong and the foliage equally large and vigorous. In color it is a pleasing dusky pink—a glowing, shimmering highlight in any garden. It is a strong color but never harsh or overpowering. Buds are firm and pointed, and the big, fully double flower has a high center surrounded by large, strong petals. Long lasting and with heavy fragrance, Pink Peace is ideal for cutting. Stems are strong and generally bear the flowers singly. The plant is very strong and bushy with large, rather dark, abundant leaves. Give it plenty of room so that it can do its best. Superb for garden decoration . . . an excellent choice for the back row of a planting because of its extra size and vigor. You can't help liking this truly fine Hybrid Tea. (The House of Meilland.) *Plant Pat. 1759.*

\$3.25 ea.—3 or more, \$3 ea.



CHICAGO PEACE

Chicago Peace Hybrid Tea. We can hardly say too much for this rose. In fact, if we had to choose about six Hybrid Teas to start a garden, Chicago Peace would be one of them. Blooms are the ideal of practically all flower lovers—huge in size, bright in color, and with such firm petals that they last for days. The color is a shimmering pink and canary-yellow combination, with coppery tones sometimes added. Stems are as thick as pencils, and they carry the flowers in proud, dramatic fashion. The plant is so strong it needs plenty of space. It blooms freely and steadily and will be a showpiece in your yard. When you cut a bloom for the house you can count on it to last several days. (Johnston.) *Plant Pat. 2037.*

\$3.50 ea.—3 or more, \$3.10 ea.



So Much for So Little


You have often heard roses called the “Queen of Flowers.” They didn’t earn this praise accidentally. For centuries they have filled people with awe because their exquisite beauty comes with so little persuasion. If you start with a good bush . . . a Star Rose . . . and give it moderate care, you will be delighted with the results.

SCARLET KNIGHT




Three Glowing Beauties

Scarlet Knight

 Grandiflora. These velvety flowers usually come in clusters of four or five on a stem and they make a lovely display. The color is a rich warm scarlet-crimson, velvety and smooth. Buds are of nice tapering form, and the double flowers have big rounded petals. They are of good size and are lightly perfumed. An especially good point about this rose is that the eye-catching color stays warm and bright without turning blue. It is a very fine garden plant with rich green leaves and strong branches. The bush is of medium height, growing upright and strong, and it blooms well all season. Scarlet Knight won an All-America Award in 1968 and is becoming more popular all the time as it becomes better known. (The House of Meiland.) *Plant Pat. 2692.*

\$3.75 ea.—3 or more, \$3.30 ea.

Miss All-American Beauty

 Hybrid Tea. A real beauty—as a matter of fact, we rate it the finest pink rose ever! These are huge flowers with 50 or more beautifully curved petals of luscious, glowing pink. The color is extremely deep and bright . . . just what you picture a perfect pink rose to be. The blooms are full and well shaped, on long stiff stems, and you will enjoy them both indoors and out. The strong plant is of average size, with healthy green foliage. Best of all, it blooms repeatedly, with as many as ten flowers on a bush at one time. One crop is hardly gone before you can see the next one coming. Nicely fragrant too. (The House of Meiland.) *Plant Pat. 2625.*

\$3.75 ea.—3 or more, \$3.30 ea.

A bright rose hedge politely says, "We'd like a little privacy, please."



OFFER No. 167

**Bright and
Beautiful**

CHICAGO PEACE
MISS ALL-AMERICAN
BEAUTY
SCARLET KNIGHT

\$9.70




MISS ALL-AMERICAN BEAUTY





For Sparkling Color

Camelot Grandiflora. This pleasing coral-pink rose has a special beauty all its own. The soft but lively coral-pink color is light and  gay, with a little patch of white at the base of the petals to give the center of the flower a pleasant touch. These are good-sized flowers with rich spicy fragrance. They have the popular high pointed center at first, and become more cupped as they open. Usually three or more are carried on one strong stem. Camelot grows quite tall and broad and is covered with shining, dark green leaves of extra large size. This is a top-notch rose for a garden, with a cameo-like beauty. We suggest planting it beside Golden Girl or Mister Lincoln. (Swim & Weeks.) *Plant Pat. 2371.*

\$3.50 ea.—3 or more, \$3.10 ea.

Lady X Hybrid Tea. We can't resist quoting what the New England Rose Society bulletin had to say about this rose: "Lady X in my opinion deserves a rating of at least 9.8! It is outstanding in every respect. It is exceptionally vigorous—our bush grew to over 7 feet and produced new canes during the season. The foliage is the largest that I have ever seen and disease resistant. The bush is very hardy. It started the season last year with over 3-foot canes. It is a heavy producer and every blossom perfect—excellent form and substance and a pleasing shade of lavender. The blooms are exceptionally long-lasting and have a light fragrance. Each bloom is borne on a straight, sturdy, almost thornless stem, 2 or more feet in length. Although we are short of space, we ordered another one this year." With a report like this, what can we add? (The House of Meilland.) *Plant Pat. 2691.*

\$3.50 ea.—3 or more, \$3.10 ea.

CAMELOT



OFFER No. 168
A Pleasing Trio

CAMELOT
LADY X
MISTER LINCOLN

\$9.20





LADY X

Mister Lincoln Hybrid Tea. A superb Hybrid Tea just like its name—completely reliable, tall, strong, a notch above its neighbors. We feel that Mister Lincoln is the best red rose of all time, and that is saying a lot. These 6-inch, lively red blooms are very full, coming from firm, pointed buds of rich dark maroon. The fragrance of this wonderful Hybrid Tea deserves special mention. Even on dull days Mister Lincoln gives forth a rich, satisfying perfume. The tall plant is sturdy and heavily branched, with leaves that are reddish at first, then glossy dark green. Stems are very strong, and the bloom has a long life both outdoors and when cut and brought inside. We are certain you will prize this handsome rose when you have it for your own. (Swim & Weeks.) *Plant Pat. 2370.*

\$3.50 ea.—3 or more, \$3.10 ea.


MISTER LINCOLN





CHRYSLER IMPERIAL

Chrysler Imperial

 Hybrid Tea. A famous rose known and loved for its heavy fragrance and wonderful deep red color. The glowing crimson-red color and the intoxicating perfume provide a combination that most people simply cannot resist. The large blooms with their huge petals are just about perfect . . . high centered, with an interesting curl to the outer petals. The bush is strong, free blooming, handsomely shaped and of medium height. Outstanding for cutting and for the garden, Chrysler is hard to beat, or even equal. It is one of the half-dozen or so Hybrid Teas that are the very basis of any planting of roses. No matter how many new red roses come on the market, this one stays. (Lammerts.) *Plant Pat. 1167.*

\$3.50 ea.—3 or more, \$3.10 ea.

Favorites

John F. Kennedy Hybrid Tea. Perhaps you will want to consider this rose simply because of its name and will plant it as a living memorial to our late president. But aside from its name, it is a beautiful large white Hybrid Tea worthy of a place in any garden. The flowers have lovely form, great style and wonderful fragrance. The long, gracefully furled buds are lemon-white, and in both bud and open stage the flowers are high pointed—the ideal form so much admired. They have an average of 35 to 40 broad glossy petals. The pure white, 5 to 6-inch, open blooms hold their appeal through all kinds of weather and enjoy a long life. Growth is tall and upright to about 4 feet. Good strong canes are crowned with bloom clusters all summer. (Boerner.) *Plant Pat. 2441.*

\$4 ea.—3 or more, \$3.55 ea.

JOHN F. KENNEDY



Everywhere



**A STAR ROSE
is a
QUALITY ROSE**

We grow our roses here in the fertile fields of southeastern Pennsylvania with our own expert staff. Every step requires careful supervision: preparation of the soil, selection of the understock (for good roots), expert budding, cultivation and spraying, harvesting, storing, packing and shipping. All these operations add up to a quality product . . . STAR ROSES. We stand back of every plant we sell. (See our Guarantee on page 14.)



**OFFER No. 171
3 Striking Colors**

CHRYSLER IMPERIAL
JOHN F. KENNEDY
QUEEN ELIZABETH

\$9.30



QUEEN
ELIZABETH

Queen Elizabeth



Grandiflora. Regal . . . noble . . . yet with informal and even innocent-looking pink flowers. Not only does the plant stand head and shoulders higher than most, but the blooming habit is unusually good too. These lovely pink flowers are always light in tone, and yet the overall picture of a plant in bloom is extremely striking. Flowers are not unusually large but are borne profusely and in steady succession all summer long. Cupped and slightly ruffled, either one bloom or a cluster is a real delight. This tall plant is hardy, healthy and long lived. The first and still one of the best of the Grandifloras. (Lammerts.) *Plant Pat. 1259.*

\$3 ea.—3 or more, \$2.65 ea.

*Roses indoors dress up
any room*



Charlotte Armstrong Hybrid Tea. Admired especially for its strikingly beautiful buds. It is sometimes called the First Lady of Hybrid Teas, not only because of its great combination of color, form and profuse bloom but also because it has so many wonderful "children." Buds are intense carmine-red, with an undertone of flame. Long and elegant, they open to 4 to 5-inch flowers of bright rose-red, high centered and waxy petaled. Stems are medium to long. The plant is tall—up to 5 feet—and is covered with leathery, disease-resistant foliage. Extra hardy and long lived. Free blooming until frost, Charlotte is a favorite everywhere. (Lammerts.)

\$2.75 ea.—3 or more, \$2.40 ea.

CHARLOTTE ARMSTRONG



Eclipse Hybrid Tea. Another rose known for its perfect bud, which is generally described as streamlined. It is especially slender and tapering. The color is golden yellow, becoming clear chrome-yellow as the flower opens. Blooms are of medium size, with about 25 petals, carried on long stems. Fragrance is quite strong and pleasant. The plant is vigorous and inclined to be tall, producing a continuing show of bloom all season. Cut the buds soon after they start to show color so that you can admire them at their best. (Nicolas.)

\$2.50 ea.—3 or more, \$2.20 ea.

FOR ROSE FACT SHEET

See Page 17

ECLIPSE



How Much t. l. c. Does a Rose Expect?

Your roses will expect this tender loving care: sunshine six hours a day, spring pruning and feeding, summer watering and spraying. "They" say five minutes of care per plant per week will do it. *We* say that getting there is half the fun—you'll enjoy caring for your Star Roses. They will reward you well.



Mirandy Hybrid Tea. So velvety, dark and fragrant that you can hardly believe it. The flowers are a marvel—fully packed with 50 or more velvety, deep wine-red petals with a mysterious dusky shading. They are both wide and deep, with a very high center and rich spicy perfume. This is a sturdy plant of medium height, with blooms opening best in hot weather. At rose shows *Mirandy* has won more than its share of prizes. Its form, color and fragrance are so different that you will soon learn to call it by name. (Lammerts.)

\$2.50 ea.—3 or more, \$2.20 ea.

GREAT ROSES FOR MANY YEARS

MIRANDY



OFFER No. 173

Four Fine
Old Masters

CHARLOTTE
ARMSTRONG
ECLIPSE
MIRANDY
PEACE

\$8.90



Roses by Mail

Since 1897

We're old, and proud of it! Our company was first in America to issue a mail-order rose catalog, first to ship roses to gardeners by mail, first to guarantee our roses to bloom. We are rose specialists and we are mail-order specialists, too. Star Roses are known everywhere as top grade, expertly shipped.

Peace Hybrid Tea. A miracle of nature! The rose for every yard . . . beginner and expert alike. The huge flowers are pale gold to cream color, with a pink flush at the petal edge that gradually creeps over the whole flower. No two blooms are exactly alike, and each flower changes from day to day. Foliage, stems and canes are extra large, and the plant is a profuse bloomer. By autumn you will be reaching up to cut the flowers. (The House of Meilland.)

\$2.50 ea.—3 or more, \$2.20 ea.

PEACE





EUROPEANA



Star[®] Rose Guarantee

Our roses are guaranteed to grow and bloom as they should for one growing season. If they do not, we will replace them or refund the purchase price.

STAR FLORIBUNDAS FOR MASS OF COLOR

Europeanana Floribunda. These enormous trusses of bloom are very heavy and full of color and life. The cupped, satiny red flowers, about 2½ inches in diameter, have 25 to 30 beautifully ruffled petals, cheery and bright. They are carried in large clusters of 15 to 20 on low, compact bushes. One cluster stays fresh for a week indoors. The plant keeps blooming through the hottest weather and will reward you for many years. (G. de Ruiter.) *Plant Pat. 2540.*

\$3 ea.—3 or more, \$2.65 ea.

Rumba Floribunda. A gay and charming rose with its blooms in clusters of 5 to 12. It's a good Floribunda to plant as a low, colorful hedge. Very free growing and vigorous, reaching about 3 feet in height, with abundant healthy foliage. Flowers are a flash of colors—a yellow, an orange, a strawberry-red, a pale pink all at one time in a cluster. Light spicy fragrance. These rainbow flowers are long lasting and freely produced, and a row of the plants as a hedge or border is a fine sight. (Poulsen.) *Plant Pat. 1919.*

\$3 ea.—3 or more, \$2.65 ea.



"We are advertised by our friends"

Remember the old slogan: "We are advertised by our friends"? Of course this is the best kind of advertising. And we are happy to know, from the letters we get, that our customers in every state tell their neighbors about Star Roses.



OFFER No. 174 3 Long-Lasting Floribundas

ANGEL FACE
EUROPEANA
RUMBA

\$8.40



RUMBA



CINDERELLA
CHIPPER



Delightful STAR MINIATURE ROSES

These toy roses are fascinating miniature reproductions of Hybrid Teas. Tiny buds, flowers and leaves are charming. Grow them like other roses, in edgings and rock gardens. Perfect for teacup bouquets.

BABY GOLD STAR. A slightly larger flower than some Miniatures . . . a golden beauty with perfectly formed buds and double blooms. Vigorous and tall for this class. (Dot.)

\$1.50 ea.—3 or more, \$1.30 ea.—10 or more, \$1.15 ea.

CHIPPER. Good-sized, coral-pink flowers, the petals perfectly arranged in classic style. Bushy, compact, 15 to 18 inches tall. (The House of Meiland.)
Plant Pat. 2764.

\$1.50 ea.—3 or more, \$1.30 ea.—10 or more, \$1.15 ea.

CINDERELLA. Dainty white with faintest touch of pink. Well-formed, 1-inch blooms daintly the bushy plant. Free blooming and entirely dependable. (deVink.)

\$1.50 ea.—3 or more, \$1.30 ea.—10 or more, \$1.15 ea.

RED IMP. Deep unfading crimson with very good bud and flower form. The most popular deep red. 10 to 15 inches tall. (deVink.)

\$1.50 ea.—3 or more, \$1.30 ea.—10 or more, \$1.15 ea.

SCARLET GEM. Beautiful clear, bright orange-scarlet. A brilliant beauty of excellent form. Hardy and free growing. (The House of Meiland.)
Plant Pat. 2155.

\$1.50 ea.—3 or more, \$1.30 ea.—10 or more, \$1.15 ea.



OFFER No. 175

5 Miniatures

- BABY GOLD STAR
- CHIPPER
- CINDERELLA
- RED IMP
- SCARLET GEM

\$6.50

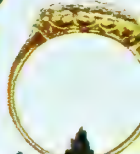


SCARLET GEM

BABY GOLD STAR



RED IMP



HOW TO USE ROSES

A good rose bush will live many years and give you, your family and neighbors lasting pleasure and satisfaction. Roses need a place where full sun will reach them at least five or six hours a day. Choose a well-drained spot away from big trees and shrubs so the rose roots won't have to fight for food and moisture. Plant your roses where they will grow best and they will give you a dazzling show.

A separate garden for roses is not necessary. Just a half dozen plants in a 3 x 4-foot bed is a fine start. They will bloom for you this year and reward you with color all summer, until fall frost.



Here are some ideas to suggest ways you can use roses around your own yard.

Do you have a garage with blank, bare walls? It's the perfect place for a climbing rose like Blaze or Rhonda. Give it a trellis for support and see how it spreads and blooms. Floribundas make an ideal border between your lot and your neighbor's (much more colorful and interesting than barberry or privet). Choose either high or low growers, whichever suits you. Miniature roses growing only a foot high are delightful around the base of a bird bath. The water splashed on them will do them good.



Why not use Floribundas for a colorful low fence?

Even a small bed of Hybrid Teas will furnish flowers for cutting



Break up the monotonous all-evergreen plantings of your street. Be different! Add some gay Floribundas like Rumba or Europeana. The evergreens will act as a handsome background for the flowers. Just be sure to give the roses enough room.

Any corner of your yard that needs beautifying is a natural location for roses. A bed of Floribundas or Hybrid Teas in front of your house can be a traffic stopper all summer. And what a joy to cut your own roses for your home and to give friends.

ABBREVIATIONS USED →

Bic	= Bicolor	Lg	= Large
Bl	= Blend	Lt	= Light
Bril	= Brilliant	M or Med	= Medium
Brt	= Bright	Multi	= Multicolor
Cl	= Climber	Or	= Orange
Cpd	= Cupped	Pk	= Pink
Cr	= Cream	Sh	= Shrub
Dbl	= Double	Spr	= Spreading
Dk	= Dark	Str	= Strong
Ex	= Excellent	T	= Tall
Fl	= Floribunda	Upr	= Upright
Gr	= Grandiflora	V	= Very
HT	= Hybrid Tea	Vig	= Vigorous
L	= Low	Wh	= White
Lav	= Lavender	Yel	= Yellow

Dooryard plantings are livened up by Camelot or Queen Elizabeth.



ROSE FACT SHEET

HYBRID TEA ROSES

Rose Name	Color	Bud	Bloom	Fragrance	Height	Plant Habit	Uses			Outstanding Characteristics	Price	
							Cut	Mass	Hedge		Each	3 For
Americana	Med red	Med	Lg, dbl	V	MT	Full, upr	Yes	Yes	No	Color, form	\$3.50	\$9.30
American Heritage	Cr-wh, pk bl	Long	Lg, dbl	Slight	T	Str, upr	Yes	Good	No	Color, form	3.75	9.90
Arlene Francis	Brt yel	Long	Dbl	V	M	Compact	Yes	Fair	No	Color	3.50	9.30
Aventure	Bril or-red	Short	V dbl	Good	M	Str, upr	Fair	Good	No	Vivid color	3.00	7.95
Big Red	Deep red	Lg	Big, fat	Good	MT	Erect, spr	Yes	Fair	No	Large blooms	3.50	9.30
Blanche Mallerin	Pure wh	V long	Even, flat	Good	MT	Upr	Yes	Fair	No	Bud & color	2.50	6.60
Candy Stripe	Striped pk	Long, lg	Lg, full	V	T	Str, erect	Yes	Yes	No	Unusual color	3.00	7.95
Charlotte Armstrong	Lt red	Long	Lg, shapely	Good	MT	Upr	Yes	Yes	No	Color, form	2.75	7.20
Chicago Peace	Pk-yel bl	Fat	Lg, full	Pk	M	Str, broad	Ex	Yes	Fair	Has everything	3.50	9.30
Christian Dior	Red-red	Shapely	Big, full	Slight	T	Rather leggy	Ex	Fair	No	Wonderful cut	3.25	9.00
Christopher Stone	Med red	Med	Med	V	M	Spr	Fair	No	No	Color	2.50	6.60
Chrysler Imperial	Deep red	Med full	Full, dbl	V	M	Vig, upr	Good	Yes	No	Has everything	3.50	9.30
Colorama	Yel-red bic	Med	Lg, dbl, cpd	Some	M	Upr	Yes	Yes	No	Vivid color	3.50	9.30
Condesa de Sagato	Yel-red multi	Short	Med cpd	Some	M	Spr	Fair	Fair	No	Color	2.50	6.60
Confidence	Pastel pk	Long	Med dbl	Slight	MT	Upr, bushy	Yes	Fair	No	A classic	3.00	7.95
Crimson Glory	Dk red	Short	Med full	V	ML	Spr	Fair	Yes	Fair	Prolific bloom	2.50	6.60
Eclipse	Clear yel	V long	Flat open	Good	MT	Upr	Fair	Yes	No	Shape of bud	2.50	6.60
First Prize	Pk	V long	Urn, dbl	Good	MT	Upr	Ex	Fair	No	A classic	4.50	12.30
Fragrant Cloud	Or-red	Full, fat	Lg	V	MT	Upr	Yes	Yes	No	Color, fragrance	4.00	10.65
Garden Party	Cr tinged pk	Med long	Lg, dbl	V	T	Broad	Yes	Yes	Fair	A classic	3.50	9.30
Garden State	Rich pk	Med long	Med full	Slight	VT	Upr	Yes	Fair	No	Vigor, color	3.00	7.95
Golden Prince	Brt deep yel	Med long	Lg, dbl	Some	M	Even	Fair	No	No	Color	3.50	9.30
Good News	Coppery pk	Oval, full	Big, full	Good	M	Broad, bushy	Fair	Fair	No	Lots of bloom	2.50	6.60
Granada	Red-yel multi	Urn-shape	Med cpd	V	M	Broad, bushy	Ex	Yes	Yes	Has everything	3.50	9.30
Indiana	Bril red	Fat	Lg, full	Good	MT	Broad	Yes	Yes	Fair	Lots of bloom	3.00	7.95
John F. Kennedy	Wh	Long	Med dbl	Some	T	Upr	Yes	Fair	No	Lots of bloom	4.00	10.65
King's Ransom	Chrome-yel	Long	Lg, shapely	Slight	MT	Bushy	Yes	Fair	No	Ex yel	3.75	9.90
Lady X	Lav-pk	Urn-shape	Med, shapely	Some	T	Upr, broad	Ex	No	No	Vigor, color	3.50	9.30
Laura	Luminous pk	V long	Lg petaled	Good	T	Erect, vig	Yes	No	No	A lady rose	4.00	10.65
Love Song	Pk & gold	Fat	Big, dbl, full	Slight	VL	Upr	Yes	Fair	No	Lg blooms	3.00	7.95
Mme. Cochet-Cochet	Peach-pk	Med	Med flat	Good	M	Bushy	Fair	Fair	No	Lots of bloom	2.50	6.60
Mirandy	Dk crimson	Lg, fat	Big, dbl	V	M	Upr, spr	Yes	Fair	No	A classic	2.50	6.60
Miss All-Am. Beauty	Deep pk	Lg, full	Big, v full	V	M	Vig, upr	Ex	Yes	No	Has everything	3.75	9.90
Mister Lincoln	Velvet red	Long	Lg, full	V	T	Vig, erect	Yes	Yes	No	Has everything	3.50	9.30
Nocturne	Dk red	Med long	Med dbl	Good	M	Upr	Yes	Fair	No	A classic	2.50	6.60
Oklahoma	Deep dk red	Full	Lg, loose	V	T	Upr, bushy	Yes	No	No	A classic	3.25	9.00
Orange Flame	Or-scarlet	Med	Lg, dbl	Good	M	Irregular	Yes	No	No	Smoky color	3.00	7.95
Pascali	Pure wh	Long	Lg, urn-shape	Slight	T	Vig, upr	Yes	Fair	No	A classic	4.00	10.65
Peace	Yel pk-tinged	Lg	Lg, full	None	M	Str, broad	Ex	Yes	Fair	A classic	2.50	6.60
Pharaoh	Deep scarlet	Med	Lg, dbl, loose	Some	MT	Vase-shape	Ex	Yes	No	Has everything	4.00	10.65
Picture	Rose-pk	Med	V dbl, med	Some	ML	Bushy	Yes	Fair	No	Form, color	2.50	6.60
Pink Peace	Rich deep pk	Big	Big, full	V	T	Str, erect	Yes	Yes	No	Has everything	3.25	9.00
Polynesian Sunset	Coral-or	Med	Lg, dbl	Some	M	Vase-shape	Yes	Fair	No	Lovely color	3.75	9.90
Pres. Eisenhower	Med red	Med	Lg, shapely	V	ML	Erect, bushy	Yes	No	No	Form, color	3.00	7.95
Pres. H. Hoover	Scarlet-pk-yel	Urn-shape	Med loose	Good	T	Erect, slender	Yes	No	No	Contrasting colors	2.50	6.60

HYBRID TEA ROSES



The marvelous, long-stemmed roses you get from a florist are Hybrid Teas. They come in a wide color range, are large and well formed, many richly fragrant, usually long stemmed. All are perfect to cut.

GRANDIFLORA ROSES



Grandifloras generally grow taller than Hybrid Teas. Their flowers may be somewhat smaller, in long-stemmed clusters. They are best planted where their height will be an advantage.

FLORIBUNDA ROSES



Floribundas bloom in clusters and are excellent for continuous masses of color outdoors. Many have blooms as well formed as Hybrid Teas. They are ideal for hedges and along walks.

CLIMBING ROSES



Climbing roses produce their flowers on long canes, creating a tremendous show on a wall, fence or trellis. Fine screen for a porch or to hide unsightly objects. Most Climbers need a season to get established before they start to bloom.

ROSE FACT SHEET, continued

HYBRID TEA ROSES, continued

Rose Name	Color	Bud	Bloom	Fragrance	Height	Plant Habit	Uses			Outstanding Characteristics	Price	
							Cut	Mass	Hedge		Each	3 For
Radiance	Rose-pk	Short	Med cpd	Good	MT	Bushy	No	Yes	Fair	Foolproof	\$2.50	\$6.60
Royal Highness	Pastel pk	Long	Lg, dbl	Good	M	Str, erect	Ex	No	No	A classic	3.50	9.30
Soeur Therese	Buttercup-yel	Short	Even	Slight	MT	Broad	Yes	Fair	No	Color	2.50	6.60
Summer Rainbow	Pk-yel	Med	Dbl, full	Some	M	Upr, bushy	Yes	Fair	No	Contrasting colors	3.00	7.95
Summer Sunshine	Deep yel	Long	Lg, loose	Slight	MT	Erect, bushy	Yes	Fair	No	A classic	3.75	9.90
Talisman	Or-rose multi	Short	Flat	Some	M	Upr	No	No	No	Good name	2.50	6.60
The Doctor	Satin-pk	Long	Big, flat	V	ML	Spr	Yes	No	No	Lg blooms	2.75	7.20
Tiffany	Pk	Long	Full, high	V	MT	Vase-shape	Ex	Fair	No	Has everything	3.25	9.00
Tropicana	Or-red	Med long	Dbl, cpd	Slight	MT	Str, leggy	Ex	Yes	No	Has everything	3.75	9.90
White Knight	Pure wh	Long	Full, high	Some	M	Vase-shape	Yes	No	No	Shape, color	3.00	7.95

GRANDIFLORA ROSES

Rose Name	Color	Bud	Bloom	Fragrance	Height	Plant Habit	Uses			Outstanding Characteristics	Price	
							Cut	Mass	Hedge		Each	3 For
Camelot	Coral-pk	Oval	Lg, cpd	V	MT	Str, spr	Fair	Yes	Fair	Beauti foolproof	\$3.50	\$9.30
Comanche	Indian red	Long	Med full	Slight	MT	Upr	Yes	Yes	No	Lots of bloom	3.75	9.90
Golden Girl	Golden yel	Med long	Dbl, shapely	Slight	M	Upr	Yes	Yes	No	Lots of bloom	3.25	9.00
Lucky Lady	Pk bicolor	Med	Med dbl	Some	MT	Upr	Fair	No	No	Lots of pk	4.00	10.65
Montezuma	Salmon-rose	Fat	Med dbl, tight	Slight	MT	Broad, str	Yes	Fair	Fair	Has everything	3.00	7.95
Queen Elizabeth	Rich lt pk	Oval	Med cpd	Slight	T	Upr, broad	Ex	Yes	Fair	Has everything	3.00	7.95
Scarlet Knight	Deep red	Med	Lg, loose	Some	MT	Upr, full	Yes	Yes	No	Lots of red	3.75	9.90
Starburst	Red-yel multi	Med	Cpd	Good	M	Broad	Yes	Yes	Fair	Vivid color	3.50	9.30

FLORIBUNDA ROSES

Rose Name	Color	Bud	Bloom	Fragrance	Height	Plant Habit	Uses			Outstanding Characteristics	Price	
							Cut	Mass	Hedge		Each	3 For
Angel Face	Soft lav	Urn-shape	Perfect, ruffled	V	L	Spr, shapely	Yes	Yes	Fair	Color, form, fragr	\$3.50	\$9.30
Betty Prior	Med pk	Small	Med size, single	None	T	Str, spr	No	Ex	Ex	Tall mass display	2.50	6.60
Circus	Gold-red multi	Urn-shape	Med	None	ML	Spr	Fair	Ex	Good	Colorful	3.00	7.95
Europeana	Dk red	Full	V dbl	Slight	L	Broad	Ex	Ex	Ex	Prolific bloom	3.00	7.95
Fashion	Brt apricot	Urn-shape	Lg, flat	Good	M	Bushy	Fair	Ex	Ex	Has everything	2.75	7.20
Fire King	Or-red	Long	Med full	Some	T	Upr	Ex	Ex	Ex	Brt color	3.00	7.95
Floradora	Or-red	Short	Urn-shape	None	T	Upr	Yes	Yes	Fair	Color	2.50	6.60
Garnette	Deep red	Short	Small, v dbl	None	L	Bushy	Yes	Yes	Low	Lots of bloom	2.50	6.60
Gene Boerner	Pk-pk	Med	Lg, dbl	Slight	M	Erect, bushy	Yes	Ex	Ex	Lots of bloom	3.50	9.30
Girl Scout	Yel	Short	Small, loose	None	L	Willowly	No	Fair	Fair	Color	3.00	7.95
Goldilocks	Pure yel	Oval	V dbl, small	None	L	Spr	No	Ex	Fair	Color	2.50	6.60
Lavender Girl	Rich lav	Urn-shape	V dbl, shapely	Some	VL	Spr	Yes	Yes	Fair	Color, form	3.00	7.95
Margo Koster	Or	Short	Small, cpd	None	VL	Bushy	No	Yes	Low	Not much	2.50	6.60
Polka	Pk-pk	Small	Med cpd	Some	MT	Broad, bushy	No	Ex	Ex	Lots of bloom	3.00	7.95
Red Pinocchio	Dk red	Blunt	Med, v dbl	Good	L	Broad, bushy	Fair	Yes	Yes	Lots of color	2.50	6.60
Rumba	Red & gold	Oval	Small, shapely	Some	M	Uniform, broad	Fair	Ex	Ex	Vivid color	3.00	7.95
Saratoga	Pure wh	Urn-shape	Med dbl	Good	L	Uniform, broad	Yes	Ex	Ex	Foolproof	3.00	7.95
Spartan	Red-coral	Oval	Dbl, even	Good	M	Bushy	Fair	Ex	Ex	Vigor, color	3.00	7.95
Sunspot	Brt yel	Oval	Even, dbl	Slight	M	Uniform, broad	Yes	Ex	Ex	Has everything	3.00	7.95
Zambra	Bril or	Oval	Even, flat	Slight	M	Broad, even	Fair	Ex	Ex	Lots of bloom	3.00	7.95

ROSE FACT SHEET, continued

CLIMBING ROSES

Rose Name	Color	Bud	Bloom	Fragrance	Height	Plant Habit	Uses			Outstanding Characteristics	Price	
							Cut	Mass	Hedge		Each	3 For
Blaze	Med red	Oval	Med size	Slight	T	Vig, str	No	Ex	Fence	Easy to grow	\$2.50	\$6.60
Blossomtime	Pk	Oval	Med size	Good	M	Vig, spr	Fair	Yes	Fence	Lots of bloom	3.00	7.95
Cl. Crimson Glory	Deep red	Med	Med full	V	M	Upr	Yes	Yes	Fence	Bloom size	2.75	7.20
Cl. Peace	Yel tinged pk	Fat	Lg, full	None	T	Vig, broad	Yes	Fair	Fence	Lg bloom	2.75	7.20
Coral Dawn	Coral-pk	Oval	Cpd, med	Good	MT	Vig, spr	No	Yes	Fence	Lots of bloom	3.50	9.30
Coralita	Or-coral	Oval	Full, dbl	Good	MT	Vig, upr	No	Yes	Fence	High quality bloom	3.50	9.30
Don Juan	Deep red	Med	Lg, full	Some	T	Upr	Yes	Yes	Fence	Has everything	3.50	9.30
Golden Showers	Daffodil-yel	Long	Med flat	Good	T	Upr	Yes	Ex	Fence	Lots of bloom	3.25	9.00
New Dawn	Flesh-pk	Oval	Med flat	Slight	T	V vig, spr	No	Yes	Fence	Vigor, foolproof	2.50	6.60
Pillar of Fire	Coral-red	Med	Med dbl	Slight	M	Str, upr	No	Ex	Fence	Lots of bloom	3.00	7.95
Red Empress	Rich red	Med	Lg, loose	Good	T	Erect, slender	Yes	Yes	Fence	Quality of bloom	3.00	7.95
Rhonda	Coral-pk	Oval	Med dbl	Slight	M	Str, broad	Yes	Yes	Fence	Lots of bloom	3.50	9.30
White Dawn	Wh	Short	Flat	Good	T	Str, irregular	No	Yes	Fence	Foolproof	2.50	6.60

SHRUB ROSES

Rose Name	Color	Bud	Bloom	Fragrance	Height	Plant Habit	Uses			Outstanding Characteristics	Price	
							Cut	Mass	Hedge		Each	3 For
Otto Linne	Rose-pk	Oval	Small, plentiful	None	M	Vase-shape	Fair	Ex	Good	Foolproof	\$2.50	\$6.60
Sea Foam	Wh	Oval	Full dbl	Slight	L	Spr	Fair	Ex	Broad	Foolproof	3.00	7.95
The Fairy	Seashell-pk	Oval	Small	None	L	Bushy	Fair	Ex	Ex	Foolproof	2.50	6.60

MINIATURE ROSES

Rose Name	Color	Bud	Bloom	Fragrance	Height	Plant Habit	Uses			Outstanding Characteristics	Price	
							Cut	Mass	Hedge		Each	3 For
Baby Gold Star	Golden yel	Long	Dbl, flat	Some	T	Upr	Ex	Fair	Fair	Form, color	\$1.50	\$3.90
Bo-Peep	Blush-pk	Urn-shape	Star-shape	None	M	Broad, upr	Good	Good	Good	Best pk	1.50	3.90
Chipper	Coral-pk	Vase	Full dbl	None	T	Full, upr	Fair	Ex	Ex	Vigor, color	1.50	3.90
Cinderella	Wh	Urn-shape	Dbl, flat	None	L	Broad	Ex	Ex	Ex	A classic	1.50	3.90
Gold Coin	Yel	Vase	Med full	Slight	ML	Spr	Ex	Good	Good	Lots of yel	2.00	5.25
Midget	Carmine-red	Oval	Cpd	None	M	Str, erect	Fair	Fair	Good	Lots of bloom	1.50	3.90
Pixie	Wh	Oval	Dbl, flat	None	L	Bushy	No	Fair	Fair	Low wh	1.50	3.90
Pixie Gold	Lemon-yel	Oval	Loose, flat	None	M	Rather leggy	No	Fair	Fair	Color	1.50	3.90
Pixie Rose	Rose-pk	Urn-shape	V dbl	Slight	M	Upr	Good	Good	Good	Lovely form	1.50	3.90
Red Imp	Deep crimson	Oval	V dbl	None	M	Broad, upr	Good	Ex	Ex	A classic	1.50	3.90
Scarlet Gem	Or-scarlet	Vase	Full dbl	None	T	Full, upr	Ex	Ex	Ex	A classic	1.50	3.90
Starina	Or-red	Urn-shape	Full dbl	Slight	T	Str, upr	Ex	Ex	Ex	Has everything	1.50	3.90
Sweet Fairy	Shell-pk	Tiny	Shapely	V	L	Bushy	No	Good	Fair	Lovely form	1.50	3.90
Tinker Bell	Deep pk	Oval	Full dbl	None	M	Leggy	Fair	Fair	Fair	Color, form	1.50	3.90

SHRUB ROSES



Shrub roses are more spreading, denser plants than bush roses and are extremely useful as thick but friendly hedges. Vigorous, healthy, requiring no care, they are used to screen private areas, to edge a property and alone as sturdy everblooming shrubs.

MINIATURES



Miniature roses are grown like other kinds but are tiny in every detail . . . only 10 to 15 inches tall, with fern-like leaves and jewel-like flowers. In rock gardens, as dainty edgings and in small beds by themselves they are captivating and ruggedly hardy.



RUTH LEHMAN



BETTY

HIGH NOON



Bushels of Bloom

6 DECORATIVE MUMS Large. Double. Long-petaled

ABUNDANCE. A big, very full flower in a beautiful color blend—bronze, amber, gold and butterscotch. Great quantities of bloom on a 2-foot plant, beginning in mid-September.

BETTY. Gay, cheerful salmon-pink flowers, rather informal in appearance. A tall grower, to 26 inches, coming into bloom around October 1.

FLAMING PILLAR. Well named for its upright growing habit and its blaze of red bloom. Most welcome as a farewell to autumn. Grows 28 inches tall. Frostproof.

HIGH NOON. Matchless 4-inch blooms of brilliant yellow. Often in bloom by the first of September. A rugged plant growing 2 feet tall.

RUTH LEHMAN. Huge blooms but extremely graceful ones. Rich creamy white, touched with pink in cool weather. Reaches 2½ feet in height and blooms in late September.

TRAIL BOSS. Spiky-petaled blooms of cactus form, in ruddy tones of peach, gold and yellow. 2 feet high, blooming in mid-September.

95c ea.—3 or more of one kind, 85c ea.

OFFER No. 180

Combination Offer

1 each of all

16 Mums

on these two pages

Only **\$12.70**

OFFER No. 180-A

6 Decorative Mums

ABUNDANCE	HIGH NOON
BETTY	RUTH LEHMAN
FLAMING PILLAR	TRAIL BOSS

\$4.90



FLAMING PILLAR

with Star Mums

Mums are so easy to grow that you will be amazed at the tremendous quantities of bloom you get from just a few plants. Their rich, vivid fall colors are exciting. Plant them where they will have at least a half day of sunlight and in dry spells be sure to keep them well watered. In late June cut the stems back to within 4 to 6 inches of the ground to get larger, bushier plants and more flowers.

6 CUSHION MUMS—Masses of Color



MUTED SUNSHINE

Plant any of these mums this spring and you will be rewarded with armloads of flowers this fall.

ARCTIC WHITE. A splendid broad mound of pure white. Blooms are 2 inches across, produced in profusion in late September. Only a foot high.

BONNIE BLUSH. A cheery cushion of warm rose-pink, generally in bloom by Labor Day. Fine for every northern garden. 15 inches tall.

GUSTO. The darkest of the lavender Cushions. Double flowers of nice size, purple with a wine-red overcast. Heavy, dark green foliage on a plant as broad as it is high (16 inches). Blooms in late September.

MUTED SUNSHINE. Soft primrose-yellow with many spoon-like petals. Flowers are semi-double, about 2 inches in diameter. Bright and colorful. Good foliage of deep green. Early to mid-September; 14 inches high.

PRINCESS PAT. Very beautiful for many weeks, starting in mid-September. The 2-inch flowers are soft yellow to creamy white, creating a moonlit haze. About 16 inches tall.

RUBY CUSHION. For us this is the best red Cushion. Deep red, fully double, with good substance and holding ability. Blooms in mid-September. About 15 inches tall.

95c ea.—3 or more of one kind, 85c ea.



OFFER No. 181 6 Cushion Mums

- ARCTIC WHITE
- BONNIE BLUSH
- GUSTO
- MUTED SUNSHINE
- PRINCESS PAT
- RUBY CUSHION

\$4.90



4 SPOONS—Artistic, Elegant, Spoon-petaled



OFFER No. 181-A

4 Spoon Mums

- GARNET SPOON
- HANSEL
- LEMON LACE
- SHINING LIGHT

\$3.40



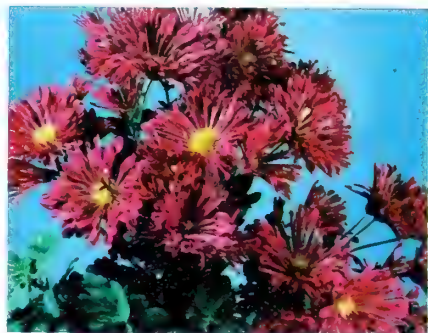
GARNET SPOON. Beautiful reddish purple, quilled petals, as if grape-stained, with a yellow button at the center of the flower. Profuse blooming. 26 inches tall. Blooms in early October.

HANSEL. Very distinctive and flashy. Flowers are about 3 inches across, rose-pink with elegant silvery tubes. A bushy plant, 18 inches tall, blooming in mid-September.

LEMON LACE. A lacy pinwheel with a big lemon-colored center surrounded by slender quill-like petals of cream-yellow. Most artistic. Grows to 24 inches and blooms in late September.

SHINING LIGHT. A lovely warm yellow, very inviting and bright whether outdoors or in. A compact grower producing quantities of 3-inch blooms in mid-September. Grows 20 inches tall.

95c ea.—3 or more of one kind, 85c ea.



GARNET SPOON

COLORFUL HARVEST GIANTS—BIGGEST OF ALL MUMS

INDIAN SUMMER



Indian Summer From mid-September until frost, Indian Summer gives you tremendous 7-inch blooms—a striking deep red-bronze with a gold reverse on each petal. A really rich and dramatic fall color. Tall grower. Rich foliage covers the plant completely.

Golden Arrow This is a real football type flower. The fine deep golden yellow incurves to form a very substantial bloom up to 6 inches across. This is one of the late September blooming varieties and, in our opinion, one of the very best yellow mums.

Silver Song A very fine pure white, solid, semi-incurved formation with flowers up to 5 inches. Outstanding vigor and production of bloom. Grows to medium height, with attractive, heavy foliage. Blooms about September 15.

Pumpkin An unusual butterscotch color that holds well. The rounded bloom has perfect flower formation on compact plants. Large 5-inch blooms make outstanding cut flowers. This classic mum grows to medium height and produces its golden blooms in late September.

September Song (Not illustrated.) One of the first mums to flower. This medium rose-pink variety blooms continuously from the first flowering until hard freeze. Compact, medium height plant. Blooms about September 15. Exceptionally fine for cutting, too.

Bronze Song (Not illustrated.) This is a low, compact grower with very big flowers in solid bronze. Flowers in mid-September. It is an excellent variety for borders or for the front row of your mum bed. Begins blooming about September 15.

ALL HARVEST GIANTS: 95c ea.—3 or more of a kind, 85c ea.

SILVER SONG

PUMPKIN

OFFER No. 182

**Six Harvest
Giants**

BRONZE SONG
GOLDEN ARROW
INDIAN SUMMER
PUMPKIN
SEPTEMBER SONG
SILVER SONG

\$4.95

GOLDEN
ARROW

SPRING 1970 ORDER SHEET

Star Roses

THE CONARD-PYLE CO.

West Grove, Pa. 19390

Quan.	HYBRID TEAS & GRANDIFLORAS	Each	3 for	Total
	Camelot	\$3.50	\$9.30	
	Charlotte Armstrong	2.75	7.20	
	Chicago Peace	3.50	9.30	
	Chrysler Imperial	3.50	9.30	
	Comanche	3.75	9.90	
	Eclipse	2.50	6.60	
	First Prize	4.50	12.30	
	Garden State	3.00	7.95	
	John F. Kennedy	4.00	10.65	
	Lady X	3.50	9.30	
	Mirandy	2.50	6.60	
	Miss All-American Beauty	3.75	9.90	
	Mister Lincoln	3.50	9.30	
	Peace	2.50	6.60	
	Pink Peace	3.25	9.00	
	Queen Elizabeth	3.00	7.95	
	Scarlet Knight	3.75	9.90	
	Starburst	3.50	9.30	

Total this column \$ _____

Quan.	FLORIBUNDA ROSES	Each	3 for	Total
	Angel Face	\$3.50	\$9.30	
	Europeana	3.00	7.95	
	Rumba	3.00	7.95	
Quan.	MINIATURE ROSES			
	\$1.50 ea.; 3 or more, \$1.30 ea.;			
	10 or more, \$1.15 ea.			
	Baby Gold Star			
	Chipper			
	Cinderella			
	Red Imp			
	Scarlet Gem			
Quan.	DECORATIVE MUMS			Total
	Abundance			
	Betty	95c each;		
	Flaming Pillar	3 or more		
	High Noon	of one variety,		
	Ruth Lehman	85c each.		
	Trail Boss			

Total this column \$ _____

Quan.	HARVEST GIANT MUMS	Total
	Bronze Song	
	Golden Arrow	95c each;
	Indian Summer	3 or more
	Pumpkin	of one kind,
	September Song	85c each.
	Silver Song	
Quan.	CUSHION MUMS	Total
	Arctic White	
	Bonnie Blush	95c each;
	Gusto	3 or more
	Muted Sunshine	of one variety,
	Princess Pat	85c each.
	Ruby Cushion	
Quan.	SPOON MUMS	Total
	Garnet Spoon	95c each;
	Hansel	3 or more
	Lemon Lace	of one variety,
	Shining Light	85c each.
Quan.	DELPHINIUMS	Total
	NOTE: Delphinium Prices are: Any 6 for \$3.50; any 10 for \$5.50; any 20 for \$10.50.	
	Astolat	
	Blue Jay	
	Galahad	
	King Arthur	
	Summer Skies	

Total this column \$ _____

Total this side \$ _____

ORDER SHEET
CONTINUED ON OTHER SIDE



Quan.	SPECIAL OFFERS	Total
	We reserve the right to substitute for sold-out varieties in Special Offers, but changes cannot be made upon request.	
	Offer No. Each Offer	
163	4 Roses \$12.90	
167	3 Roses 9.70	
168	3 Roses 9.20	
171	3 Roses 9.30	
173	4 Roses 8.90	
174	3 Floribunda Roses 8.40	
175	5 Min. Roses 6.50	
180	16 Mums 12.70	
180-A	6 Decorative Mums 4.90	
181	6 Cushion Mums 4.90	
181-A	4 Spoon Mums 3.40	
182	6 Giant Mums 4.95	
183	9 Delph. 4.95	
183-A	20 Delph. 9.75	

Column Total

Total From Other Side

Add 50c packing charge
if order is less than \$10.00

Add 6% Sales Tax for
Pennsylvania deliveries

TOTAL ORDER

Amount enclosed

We pay all shipping charges,
no other cost to you.

THANK YOU FOR YOUR ORDER
It will receive our careful attention

Date _____

TERMS

Please send payment with
order or before shipment.
No C. O. D.'s

DO NOT WRITE IN THESE SPACES PLEASE

ORDER NO.	ZIP NO.	PP ZONE	ADV. CODE	SUB.	P.C.
CLASS	AMOUNT	TAX	TOTAL	SERIALS	

NOTE: If the variety you select is sold out, we will send you a similar kind of equal or greater value at no extra charge to you. If you do not wish this special service, please check here However, we will give this service on "Special Offers" when necessary even without this authorization from you.

Orders accepted subject to stock unsold. Prices are for Spring 1970 only, 2-year, field-grown, dormant Roses, guaranteed to bloom. NOTE: All "3-for" and group offer prices apply ONLY when plants are shipped together to one address. "3-for" prices apply to 3 of one variety only. All plants and items in this catalog shipped parcel post prepaid direct to your door. Please add 50c packing charge if order is less than \$10—see explanatory note, page 24 of catalog. Plants will be shipped at proper time for planting in your locality. Patented varieties are sold under license from the patent owner.

SPRING 1970

DIVISION OF AGRICULTURE
WASHINGTON
REFERENCE LIBRARY
DC 20250



Star[®] Rose Guarantee

Our roses are guaranteed to grow and bloom as they should for one growing season. If they do not, we will replace them or refund the purchase price.

Aristocratic PACIFIC HYBRID Delphiniums



OFFER No. 183

3 each:
ASTOLAT, GALAHAD,
SUMMER SKIES

9 plants for

\$4.95

OFFER No. 183-A

4 each of all
5 Delphinium

20 plants for

\$9.75



**ANY 6 FOR \$3.50 ANY 10 FOR \$5.50
ANY 20 FOR \$10.50**

Can you picture majestic spikes of color up to 6 feet tall, standing like sentinels in your garden? These spectacular Pacific Hybrid Delphiniums are not hard to grow if you give them good garden soil and a spot in the sun. Set the plants 18 inches apart so they get good air circulation, and stake them for protection from the wind. Don't let them dry out in the summer.

Astolat Lovely tones ranging from pale blush through shades of lilac-pink to deep raspberry-rose, with brown and black eyes, or bees. A richly stunning combination. Huge double flowers all summer.

Blue Jay A reliable blue, offering shades from medium to dark blue. A good grower and a little different in its striking and intense color shadings. Dark contrasting bee. Large flowers, symmetrically shaped and perfectly placed on the strong stem.

Galahad Enormous, clear white flowers averaging 3 inches in diameter, with a white bee as well. Blooms of heavy texture on pyramidal spikes, with flowers well spaced on the stem. Good branching habit. Resists mildew well. Deservedly popular, for it represents the peak of perfection.

King Arthur Rich royal purple with a velvety texture and large white bee. One of the most brilliant ever developed. Long flower spikes on thin, woody stems. Very graceful, excellent for cutting and show purposes as well as garden decoration.

Summer Skies A light heavenly blue with a white bee, like fleecy clouds against a summer sky. The finest light blue delphinium, and an asset to any hardy border planting.



This Special Garden Guide

is being mailed to you as an urgent reminder that ORDERING TIME is here. Spring comes on fast, and before you know it everything's in bud. By ordering now you will have your rose bushes in time to enjoy that extra special pleasure that only roses bring.

This catalog offers a selected group of roses, mums and delphiniums. We know you will be pleased with any of the kinds you order. We do urge you to ORDER NOW while a good selection is still available and there is still time to plant. However, we do ship plants through the middle of May just in case your order is delayed.

PLANTING GUIDE sent with your order



This 24-page booklet is a helpful guide to rose planting and culture. It describes and pictures the steps to successful rose growing, from planting through pruning and spraying. Gives facts, too, about planting and growing perennials and bulbs. We have prepared this Planting Guide as a service to you. A copy is sent FREE with every order.

ORDER INSTRUCTIONS

Dormant plants. Prices in this catalog are for dormant roses and are void after June 1970. All Rose plants are 2-year, field-grown, guaranteed to bloom. Orders are accepted subject to stock unsold. Patented varieties are sold under license from the patent owner.

All "3-for" and group offer prices apply ONLY when plants are shipped to the same address at the same time. "3-for" prices apply to 3 of one variety only. In the group offers, we reserve the right to substitute sold-out varieties with kinds of equal or greater catalog value. We substitute only when necessary and only with other good varieties. However, we cannot make changes in offers on request. Their special price prohibits the extra handling these requests would require.

Parcel post prepaid. All plants in this catalog are shipped at our expense, prepaid to your door. Plants will be shipped at the proper time for planting in your locality.

Packing charges. Orders over \$10 are packed without charge. We must charge a 50c packing fee on all orders that amount to less than \$10. This packing charge will apply on any portion of an order shipped separately which totals less than \$10. In cases where weather or some other condition forces us to ship parts of your order separately, this charge will not apply.

Enclose payment with your order. We do not ship C.O.D.

Add sales tax of 6% on orders to be delivered in Pennsylvania.

Please print your name and address on the order sheet, and don't forget the Zip Code. All orders from one household should be made under the same name.

Phone Orders Welcome: 215-869-2426



Dear Gardening Friends:

There is still time to order Star Roses for bloom this June if you act at once. Planting time is just around the corner, so I urge you not to delay.

We have a newly designed Star tag to identify our plants (see below). You can count on it as a guarantee of a sturdy, healthy bush. Again we have a fine crop of the best plants your money can buy, and our efficient service

plus careful packing and handling methods will assure you of absolutely top-grade roses this spring.

Our catalog has a new feature this year—what we call the Rose Fact Sheet, starting on page 17. This gives you a thumbnail description of the roses we sell, and we hope it helps you to spot just what you're looking for in a rose.

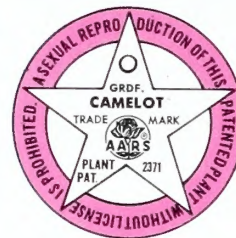
We'll be looking for your order.

Yours for a wonderful rose season,

S. B. HUTTON, SR.

Chairman of the Board

THE CONARD-PYLE COMPANY



Three Garden Centers to Serve You

We'll be pleased to have you visit our Garden Centers:

No. 1, just one mile off U. S. Route 1 at West Grove, Pa. Open all year 7 days a week, 9 to 6.

No. 2, on U. S. Route 1 just two miles south of West Grove, at the entrance to our rose fields and rose gardens. Open summer and fall, 7 days a week, 9 to 6.

No. 3, at Lancaster, Pa., on Route 230 (by-pass) 1/2 mile west of Manheim Pike. Open all year, every day, 9 to 6.

In addition to the plants in this catalog our Garden Centers carry hundreds of other kinds as well as seeds, bulbs, flowering potted plants, perennials, fruit trees and all sorts of lawn and garden supplies.

For a special treat, come to see our 40 acres of roses in full bloom at Garden Center No. 2 from early July until October.

STAR ROSES

The Conard-Pyle Co. West Grove, Pa. 19390

